

5 Projection of the Nervous System

Pituitary Gland Points

Prolactin Point

Location:

- When children are desired, the right ear usually bears the Silver Point (the needle metal needs to be decided).
- Just above the ACTH Point.

Indications:

- When children are desired (because hyperprolactinemia is often present, use silver needle on the right ear).
- Supports lactation (use gold needle).
- Hormonal disorders; for example, oligomenorrhea or amenorrhea associated with hyperprolactinemia (use silver needle).

ACTH Point

Location:

- The right ear normally bears the Gold Point.
- In the anterior corner of the intertragic notch where the notch ascends to the tragus.

Indications:

- ACTH stimulation; for example, in all cases of allergies.
- For supporting amalgam elimination use gold needle on the right ear.
- Corresponds to Point Liv 13 of body acupuncture.

TSH Point

Location:

- Requires stimulation or sedation depending on the syndrome.
- Just behind the ACTH Point (in posterior direction toward the antitragus).

Indications:

- Predominantly diagnostic when latent hypothyroidism is suspected; supports the therapy in case of disease.

Gonadotropin Point (FSH/LH Point)

Location:

- The right ear normally bears the Gold Point (this may vary with the syndrome; hence, the needle metal needs to be decided).
- On the anterior outer bulge of the antitragus, about 2 mm inferior to the upper reflection. When the antihelix is imagined as a snake, the antitragus forms the head of the snake, while the Gonadotropin Point forms the eye.

Indications:

- Mainly during menopause in combination with the Estrogen Point.

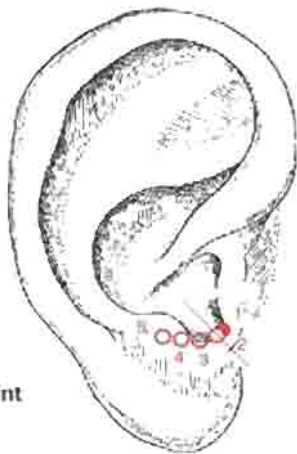
Oxytocin Point

Location:

- On the antitragus, posterior to the Gonadotropin Point. The Vasopressin Point is also located very close to it.

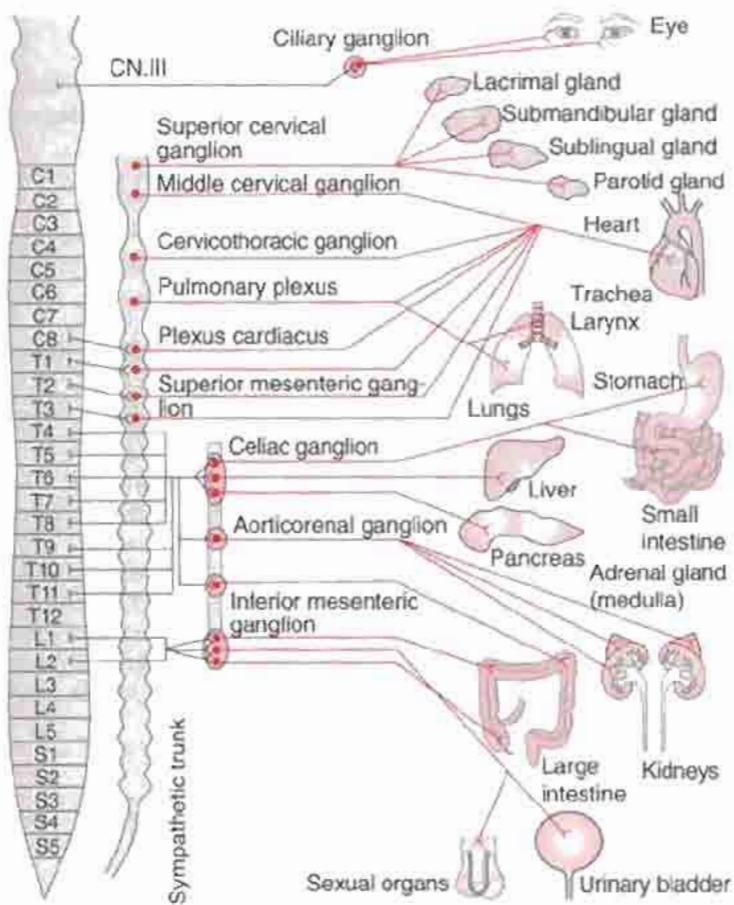
Indications:

- Supports milk ejection during lactation.



- 1 Prolactin Point
- 2 ACTH Point
- 3 TSH Point
- 4 Gonadotropin Point (FSH/LH Point)
- 5 Oxytocin Point

Projection of the Autonomic Nervous System



System of sympathetic innervation of the organs

(taken from: Neurologie des vegetativen Systems, R. Schiffer, Springer Verlag, Berlin - Heidelberg - New York 1985)

Sympathetic Trunk (Paravertebral Chain of Sympathetic Ganglia, Postganglionic Sympathetic Nerves)

Location:

- The chain of sympathetic ganglia is represented parallel to the projection of the vertebral column, at the foot of the antihelical wall where the wall merges into the concha.

The area includes the narrow band of the concha that is not innervated by the auricular branch of the vagus nerve and, thus, belongs to the projection of the mesoderm.

In total, the sympathetic trunk consists of 23 ganglia: three in the cervical region, 12 in the thoracic region, and four each in the lumbar and sacral regions. In the cervical region, the original eight ganglia have combined to form three. In front of the coccyx, the two sympathetic trunks unite to form a single ganglion (ganglion impar).

Indications:

- The zone should always be considered for concomitant therapy in all organic affections (internal organs, vertebral column, head region).
- Indications can easily be deduced from the descriptions above. Especially those neurovegetative disorders which occur, for example, as a result of vertebral blockage or herniation of an intervertebral disk can be influenced.
- Migraine also calls for the testing of activity, and possibly needling, in the upper Zone of Sympathetic Trunk.

Note: Not all fibers that originate in the spinal cord synapse in the sympathetic trunk.

Some preganglionic sympathetic fibers pass through the sympathetic trunk without forming synapses and reach the larger **prevertebral ganglia** (e.g. celiac plexus) where they synapse with postganglionic neurons.