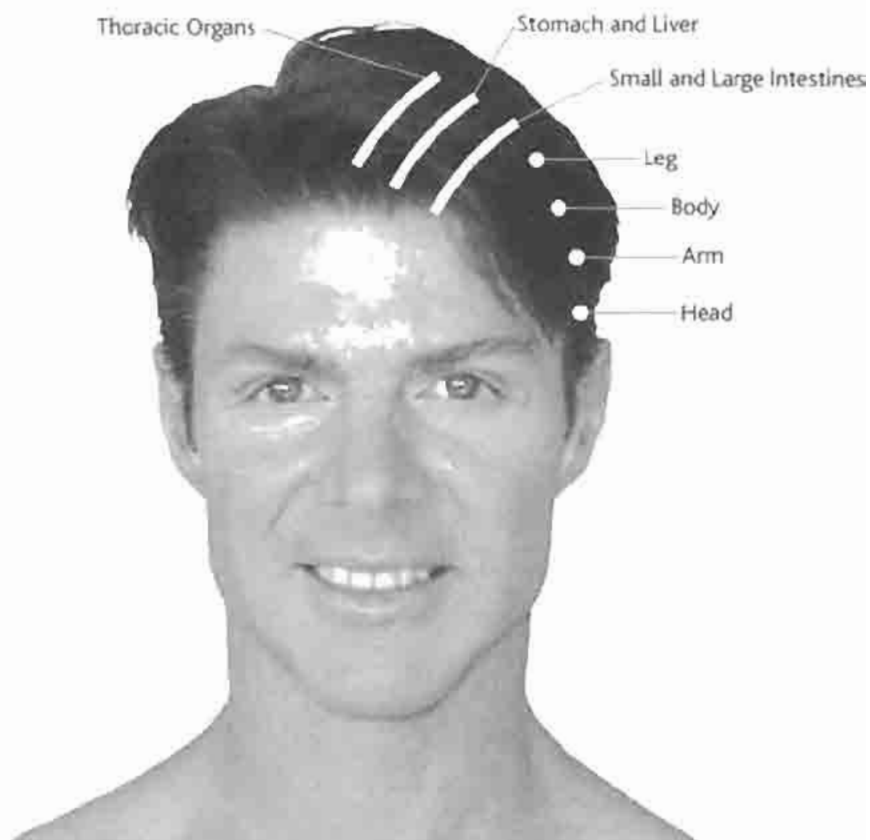


A Frontal view



B Side view

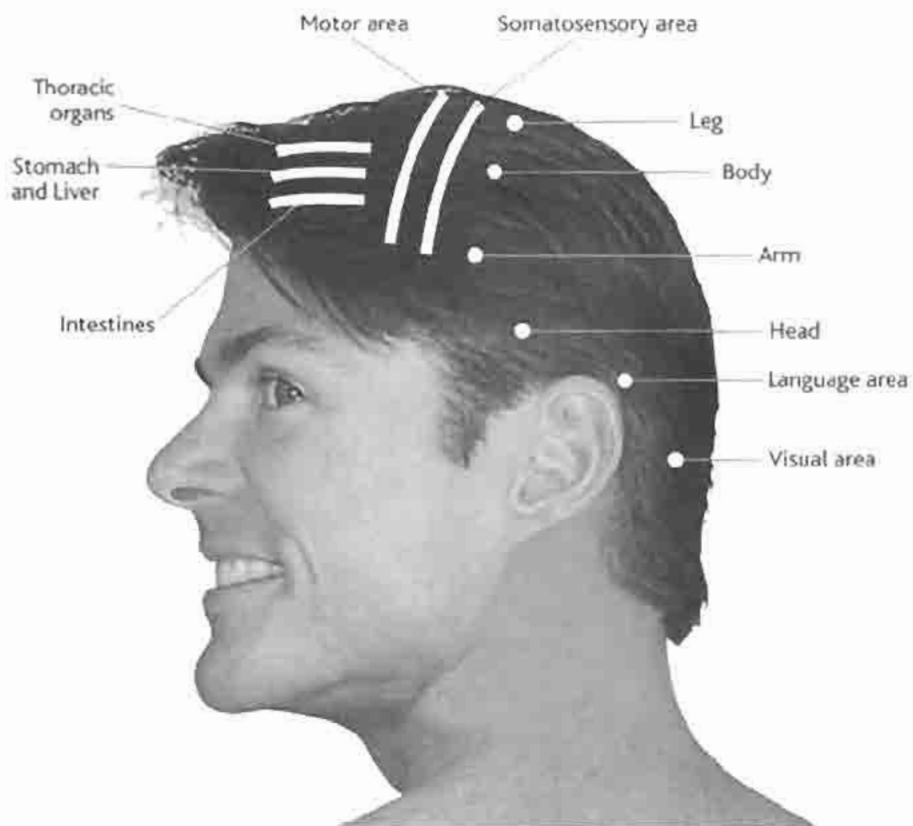
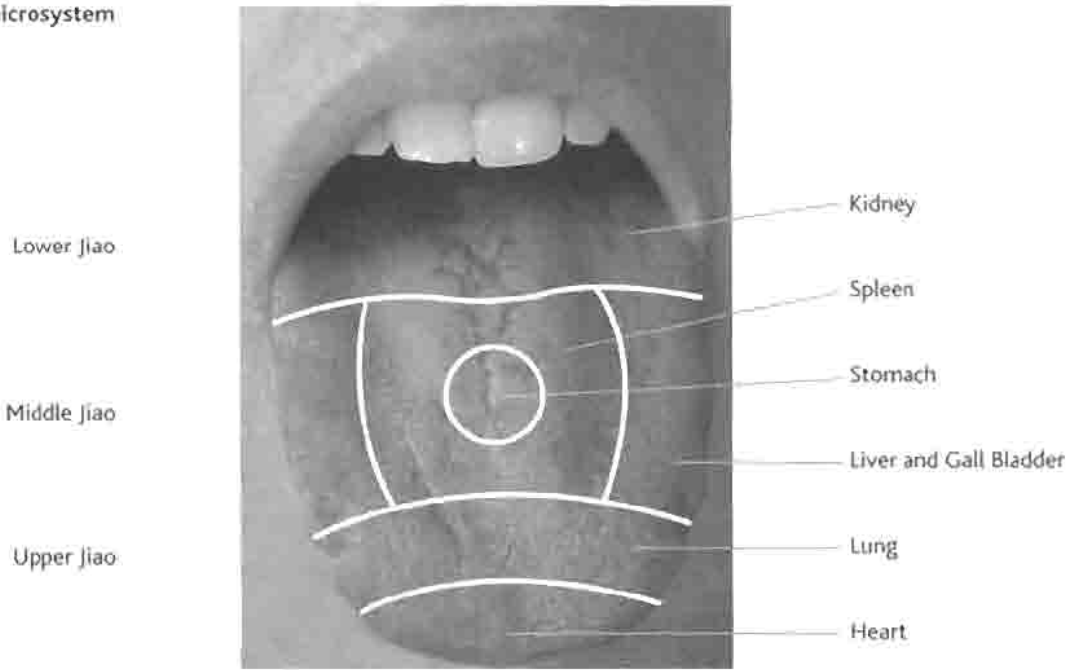


Figure 2.8 The scalp micro-acupuncture points related to the underlying cerebral cortex viewed from the front (A) and the side (B).

A Tongue microsystem



B Pulse microsystem

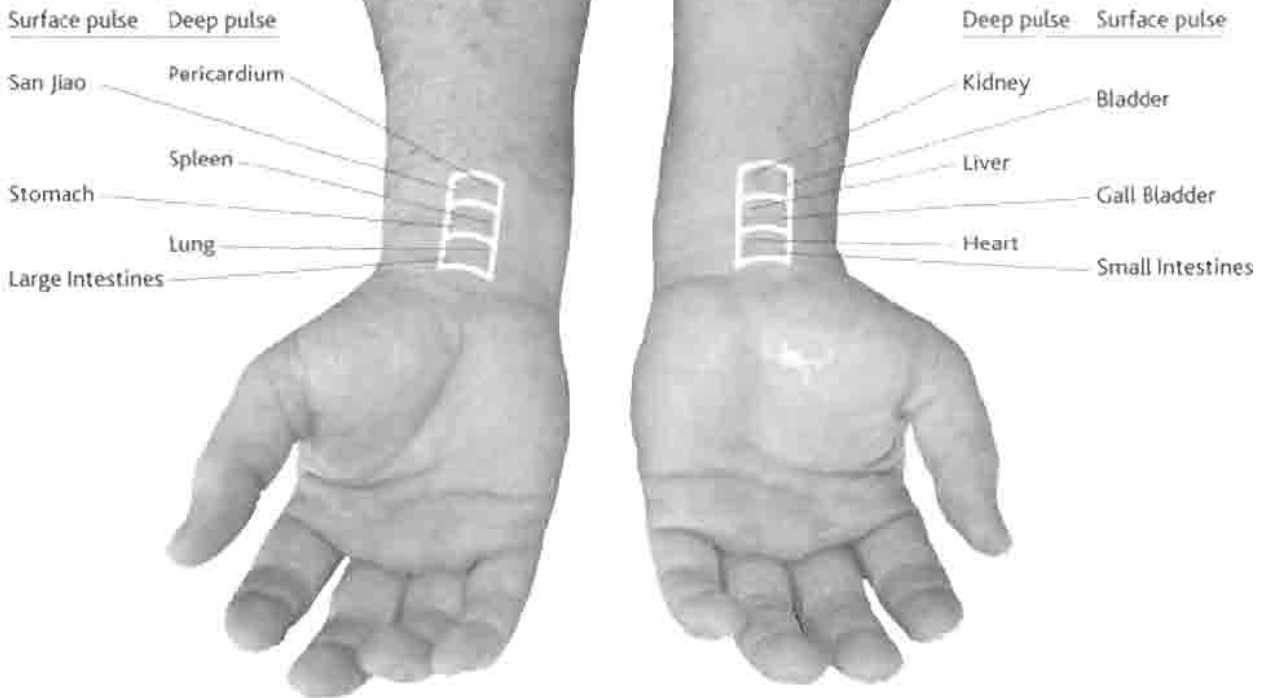


Figure 2.9 Internal organs represented on the tongue microsystem (A) are contrasted with the acupuncture channels represented at the radial pulse (B).

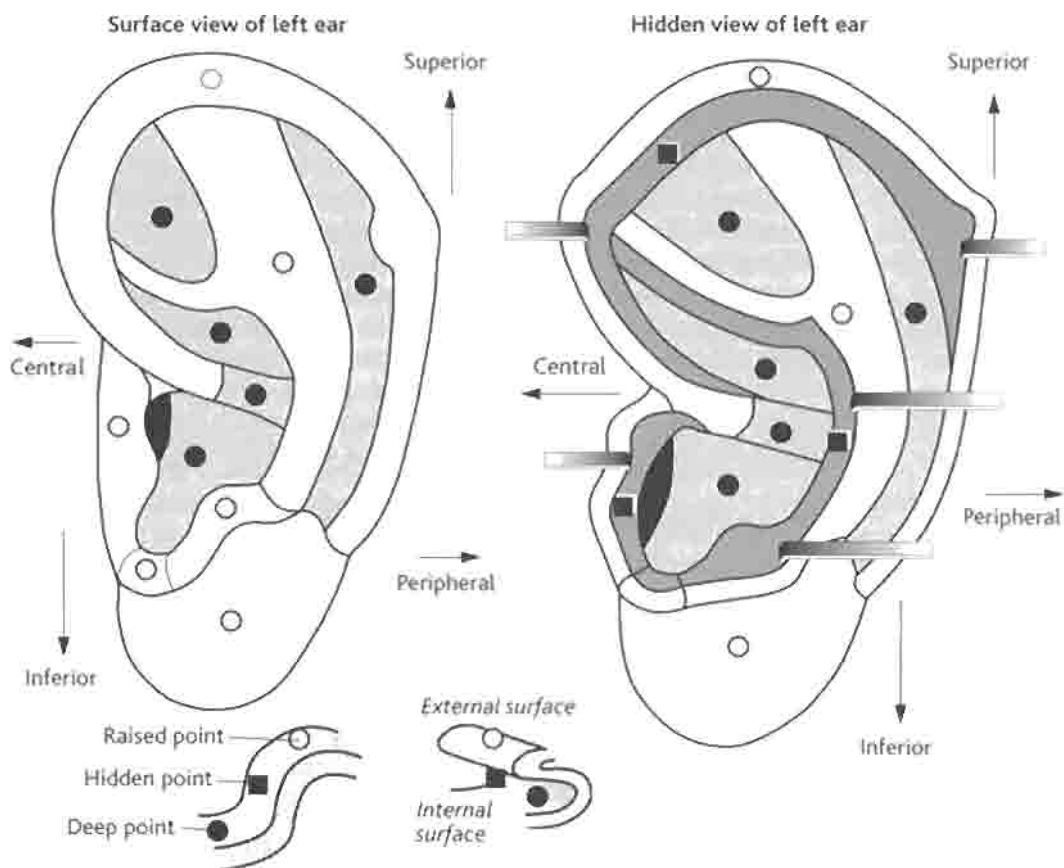


Figure 3.6 A depth view of the ear with the symbols used to represent raised regions (○), deep regions (●), and hidden regions (■) of the auricle.

3.5 Anatomical regions of the external ear

Classic anatomical texts have presented specific anatomical terms for certain regions of the external ear. This appendage is also known as the pinna or auricle. Latin terms were used to describe designated regions of the ear as well as specific terms that were developed at the meetings of the World Health Organization on acupuncture nomenclature. Some regions of the external ear are described in auricular acupuncture texts, but are not discussed in conventional anatomy books. The official terms for the external ear that were described in the *Nomina anatomica* (International Congress of Anatomists 1977) included 112 different terms for the internal ear (*Auris interna*), 97 terms for middle ear (*Auris media*), but only 30 terms for the external ear (*Auris externa*). The nine primary auricular structures that were identified in Woerdeman's (1955) classic anatomy text included the helix, antihelix, tragus, antitragus, fossa triangularis, scapha, lobule, concha and Darwin's tubercle. There are two additional subdivisions for the limbs of the antihelix, the superior crus and the inferior crus, and two subdivisions of the concha, a superior cymba concha and an inferior cavum concha. Delineation of the antitrago-helicine fissure, which separates the antitragus from the antihelix, brings the total to 14 auricular terms for the lateral view of the auricle and 12 additional terms for the mastoid view of the ear. Subsequent anatomy books, such as Hild's (1974) *Atlas of human anatomy* or Clemente's (1997) *Anatomy: a regional atlas of the human body*, basically concur with these earlier designations for the external ear. Anatomists interested in auricular acupuncture have thus considered supplemental terminology to delineate the structures of the auricle that are used in the clinical practice of auriculotherapy.

The outer ridge of the auricle is referred to as the helix, which is the Latin term for a spiral pattern. A middle ridge within this outer rim is called the antihelix. The helix is subdivided into a central helix root, an arching superior helix, and the outermost helix tail. The cauda, or tail, refers to a long, trailing hind portion, like the tail of a comet. The subsections of the antihelix include an antihelix tail at the bottom of the middle ridge, an antihelix body in the center, and two limbs that extend from the antihelix body, the superior crus and the inferior crus. A fossa in Latin refers to a

fissure, or groove. Between the two limbs of the antihelix lies a sloping valley known as the triangular fossa, whereas the scaphoid fossa is a long, slender groove that separates the higher ridges of the antihelix from the helix tail.

Adjacent to the face and overlying the auditory canal is a flat section of the ear known as the tragus. Opposite to the tragus is another flap, labeled the antitragus. The latter is a curving continuation of the antihelix, forming a circular ridge that surrounds the central valley of the ear. A prominent crease separates the antihelix from the antitragus. Below the antitragus is the soft, fleshy ear lobe, and between the antitragus and the tragus is a U-shaped curve known as the intertragic notch. The deepest region of the ear is called the concha, indicating its shell-shaped structure. The concha is further divided into an inferior concha below and a superior concha above. While most anatomical texts (Clemente 1997; Woerdeman 1955) respectively refer to these

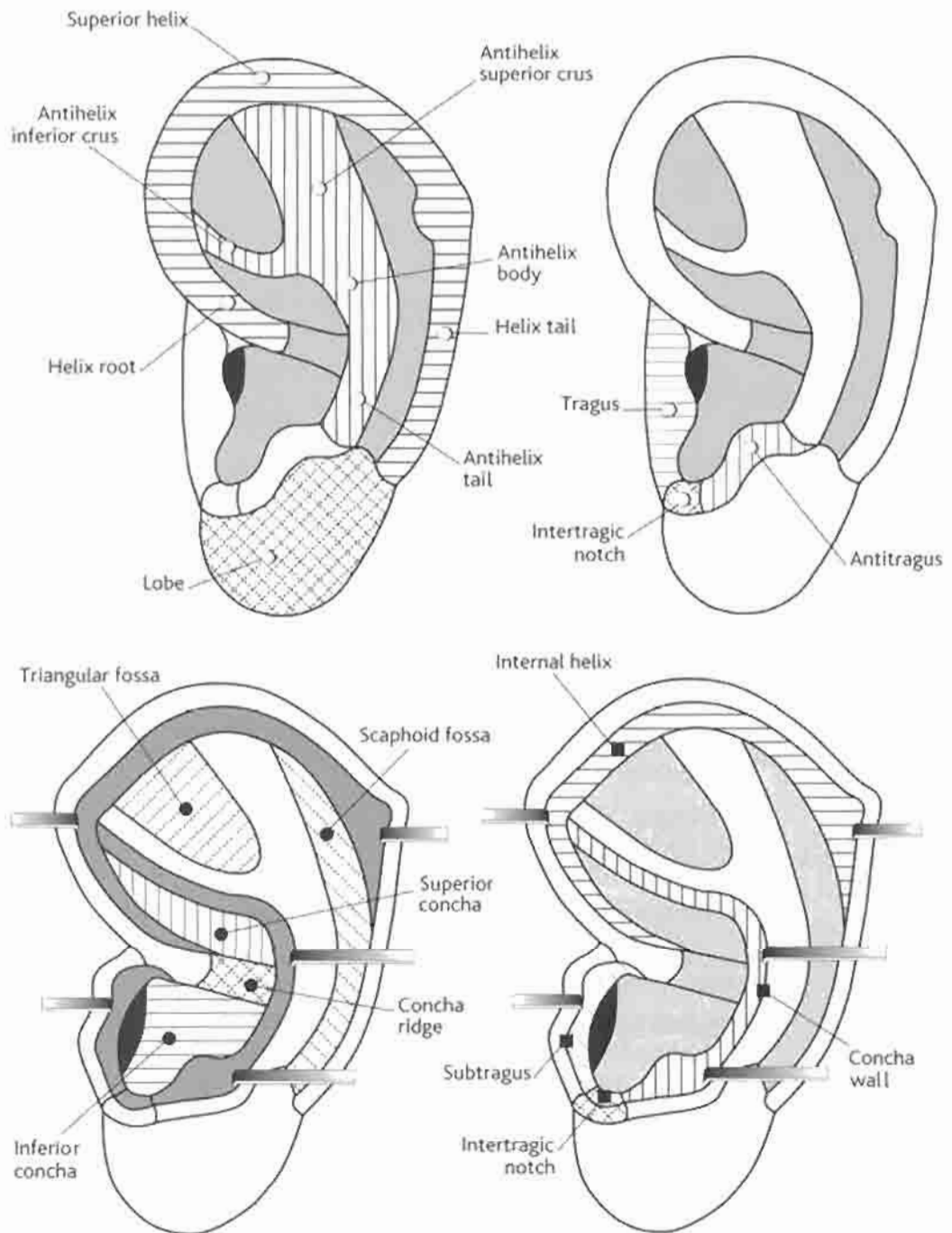


Figure 3.7 Terms used for specific anatomical regions on the external ear: helix, antihelix, tragus, antitragus, triangular fossa, scaphoid fossa, superior concha and inferior concha.